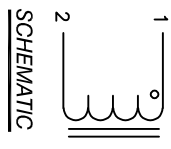


The information contained in this drawing is the sole property of Coil Winding Specialist, Inc. Any reproduction in part or whole without permission of Coil Winding Specialist, Inc. is prohibited.

DIMENSIONAL TOLERANCES INCHES (MM)												
A	B	C	D	E	F	G(X2)	H(X2)	I(X4)	J	K	P1	P2
4.56 [115.52]	2.93 [74.42]	3.20 [81.28]	1.00 [25.40]	0.49 [12.45]	0.67 [17.10]	0.16x0.51 [4.00x13.00]	0.27 [6.86]	0.20 [5.08]	1.15 [29.21]	1.98 [50.29]	1.49 [37.85]	2.01 [51.05]

REVISION HISTORY		SIGN & DATE	
REV	ECN	DESCRIPTION	DATE
A		PRODUCTION RELEASE	07/27/2020
B	100424	REVISED PART NUMBER	10/04/24

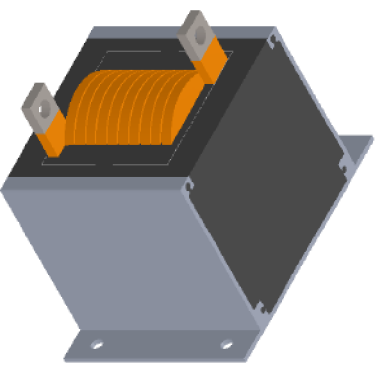
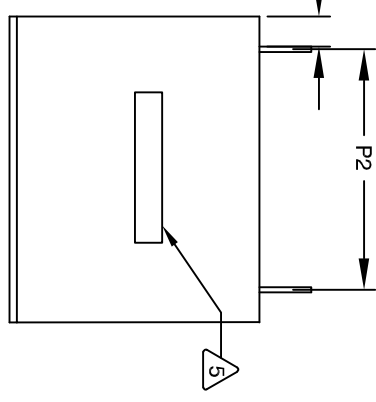
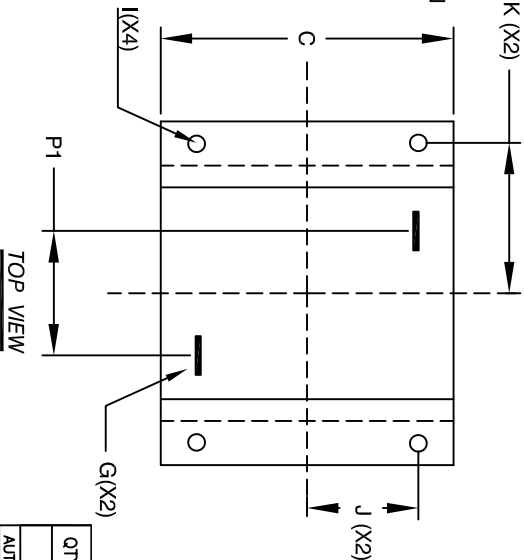
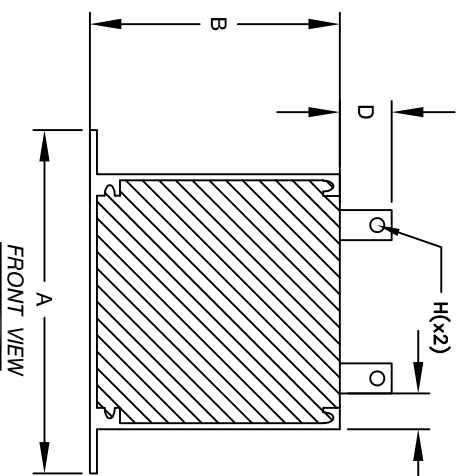


- 6 BUILT TO ROHS COMPLIANCE AND LEAD FREE.
- 5 MARK PART NUMBER, REVISION AND DATE
- 4 CONSTRUCTION

WEIGHT: 2300 GRAMS TYP
 MAX INDUCTOR TEMP RATING: 200°C
 RECOMMENDED OPERATING TEMP: -40°C TO 85°C
 HI-POT TEST FOR WINDING TO CORE ISOLATION: 1000VDC @ 2mA, 1 MIN
 INTERWINDING CAPACITANCE = 12pF TYP @ SRF
 |Z| = 7.8 KILO-OHMS TYP @ SRF
 SRF = 6.05 MHz TYP
 RATED CURRENT: 400 AMPS WITH FORCED AIR FLOW
 DCR = 0.8 MILL-OHMS MAX.
 DC BIAS: SEE TABLE ON THE RIGHT
 L = 60uH ± 15%, MEASURED AT 10 KHZ, 0.25V, ZERO DC BIAS
 SPECIFICATIONS @ 25°C:

- ENCLOSURE: ALUMINUM METAL
- WIRE: UL RECOGNIZED 200°C RATED MAGNET WIRE
- CORE: POWDERED CORE
- INSULATION CLASS 200°C REQUIRED
- MATERIAL: UL RECOGNIZED 94V-0 FOR FLAMMABILITY

ANY TOLERANCE THIS DIM. CAN VARY A LITTLE FROM PART TO PART.
 TYP IN DIM. TOL. TABLE REFERS TO A NON-CRITICAL TYPICAL (AVERAGE) DIM. WITHOUT
 NOTES: UNLESS OTHERWISE SPECIFIED, READ FROM BOTTOM UP.
 CAGE CODE: 5DME2



DC BIAS (AMP)	L (REF)
0	59.5uH
10	56.5uH
20	52.8uH
40	44.0uH
60	35.6uH
80	28.9uH
100	23.6uH
140	14.7uH
160	14.0uH
180	13.5uH
200	13.0uH
240	12.50uH
260	12.0uH
280	11.6uH
300	11.0uH
320	10.0uH
340	9.3uH
360	8.6uH
380	7.4uH
400	6.0uH

PARTS LIST		DESCRIPTION		ITEM NO.
QTY	CODE IDENT	MFG. P/N		
UNLESS OTHERWISE SPECIFIED				
DIMENSIONING AND TOLERANCE PER ANSI Y14.5M				
ALL DIMENSIONS ARE IN INCHES AND [MILLIMETERS]				
TOLERANCE INCHES: .XXX=±.010 .XX=±.020 .X=±.030				
TOLERANCE METRICS: .XXX=±.254 .XX=±.51 .X=±.076				
ANGLE PROJECTION				
DO NOT SCALE DRAWING				
AUTOCAD		X		
SOLIDWORKS				
DATE	DATE			
07/26/2020	07/27/2020			
DRAWN		TN		
CHECKED		JM		
ENGR.		JL		
APPR.		JL		
DATE		07/27/2020		
TITLE:		High Current Helical Inductor		
SIZE [DIM. NO.]		A ELCES38A92-600M-400A		
SCALE		NOT TO SCALE		
SHEET		1 OF 1		

Coil Winding Specialist, Inc.
 353 W. GROVE AVE
 ORANGE, CA 92665